

# Elefir-EN

FIRE DESIGN OF STRUCTURAL MEMBERS  
ACCORDING TO EUROCODE 3

SOLUTION CENTER

DECEMBER 2010

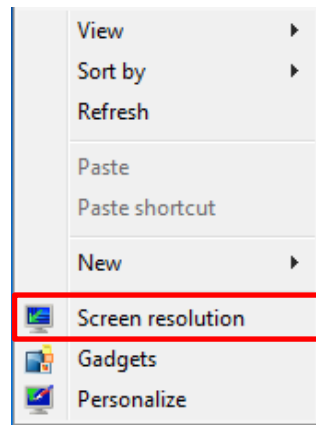
## Contents

1. Changing Windows DPI .....	2
1.1 Solution for Windows 7 .....	2
1.2 Solution for Windows Vista .....	4
1.3 Solution for Windows XP .....	6

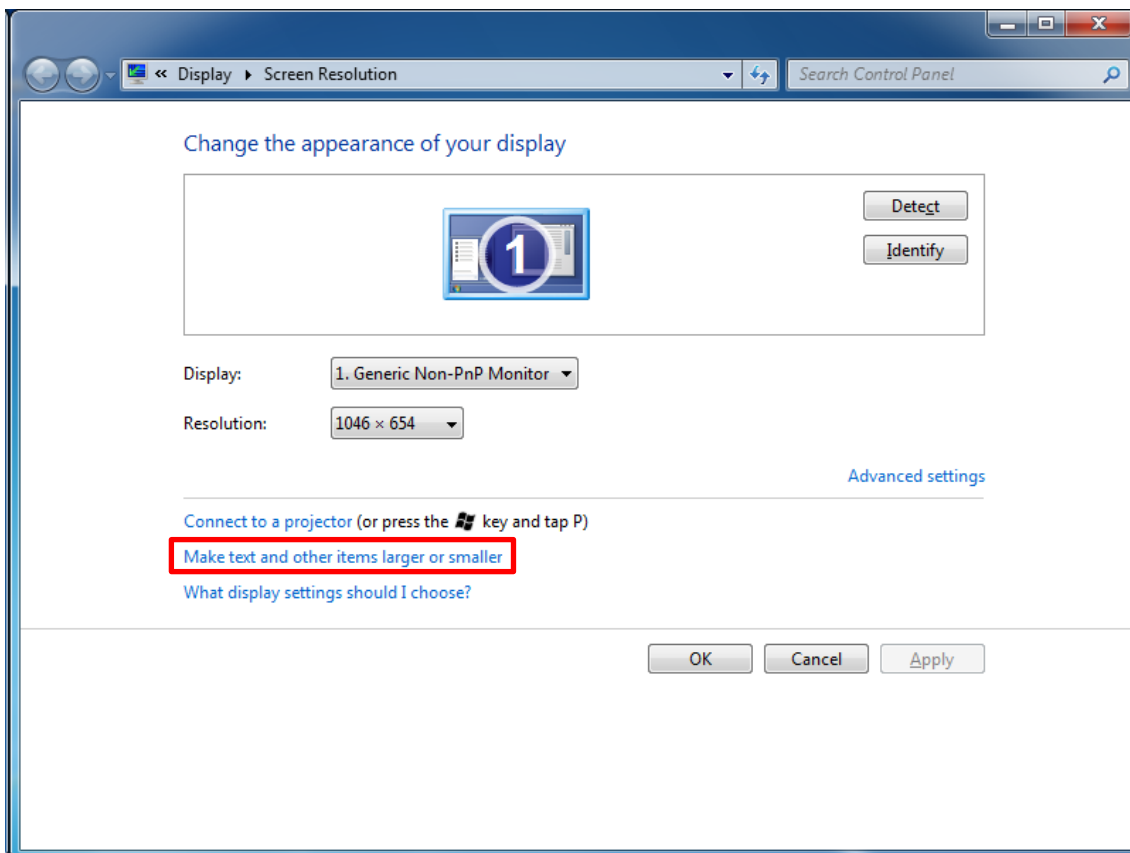
## 1. Changing Windows DPI

### 1.1 Solution for Windows 7

a) Right click on an empty area of your desktop to open the context menu and click on **Screen Resolution**:

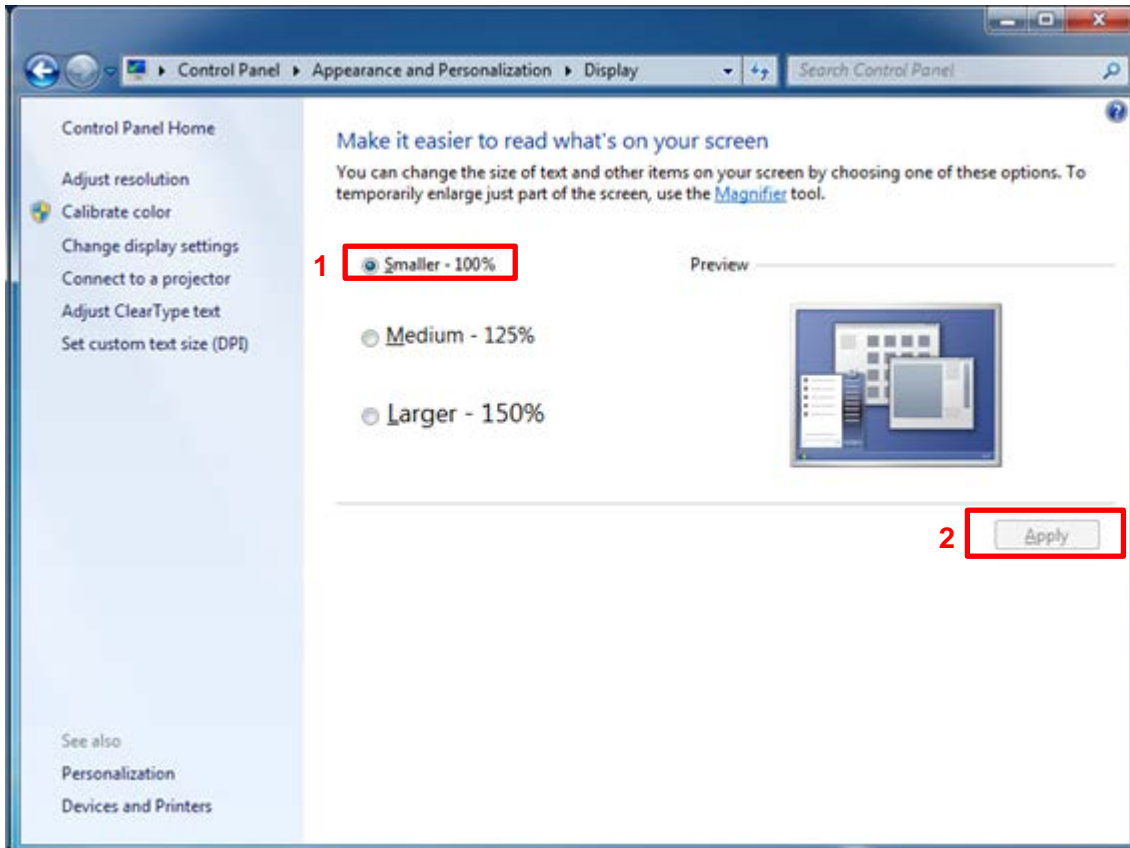


b) On the following screen click **Make text and other items larger or smaller**:



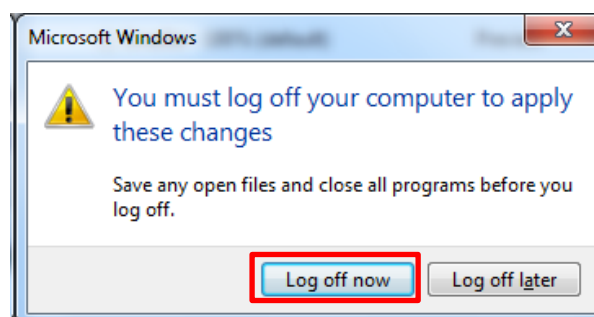
c) On the following window, choose the correct option to run Elefir-EN which is:

- **Smaller - 100%**



Click on **Apply** button to apply the changes to your Operating System.

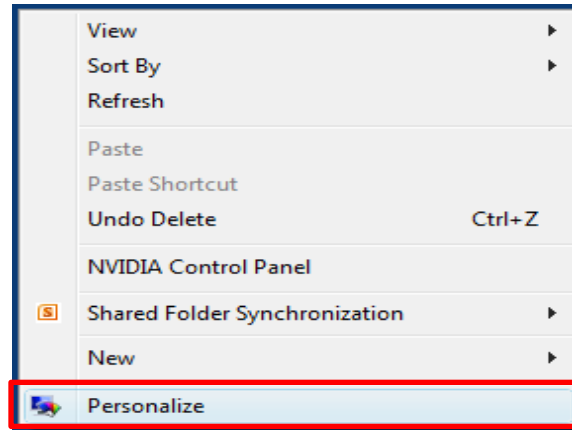
d) In the next window, click on **Log off now**.



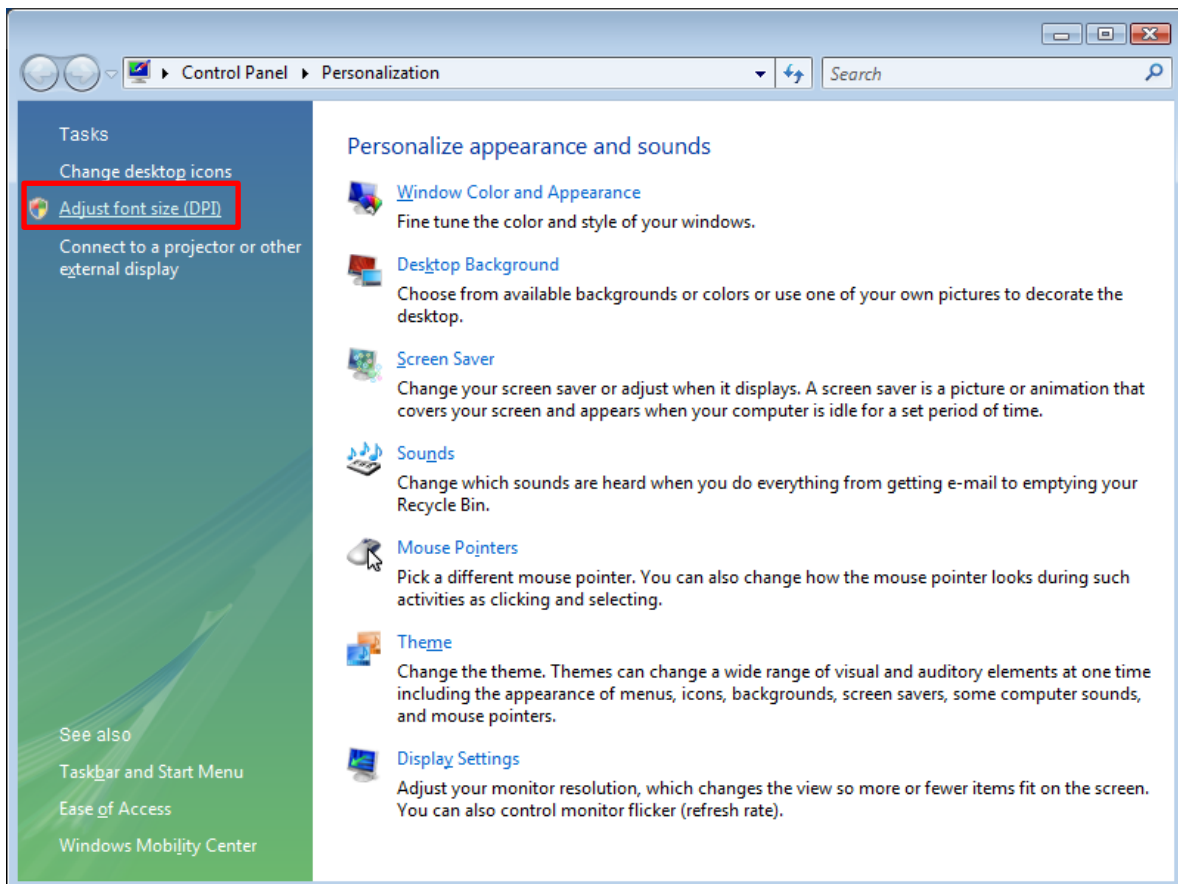
e) After that, **Log in** again and **Run Elefir-EN**.

## 1.2 Solution for Windows Vista

a) Right click on an empty area of your desktop to open the context menu and click on **Personalize**:

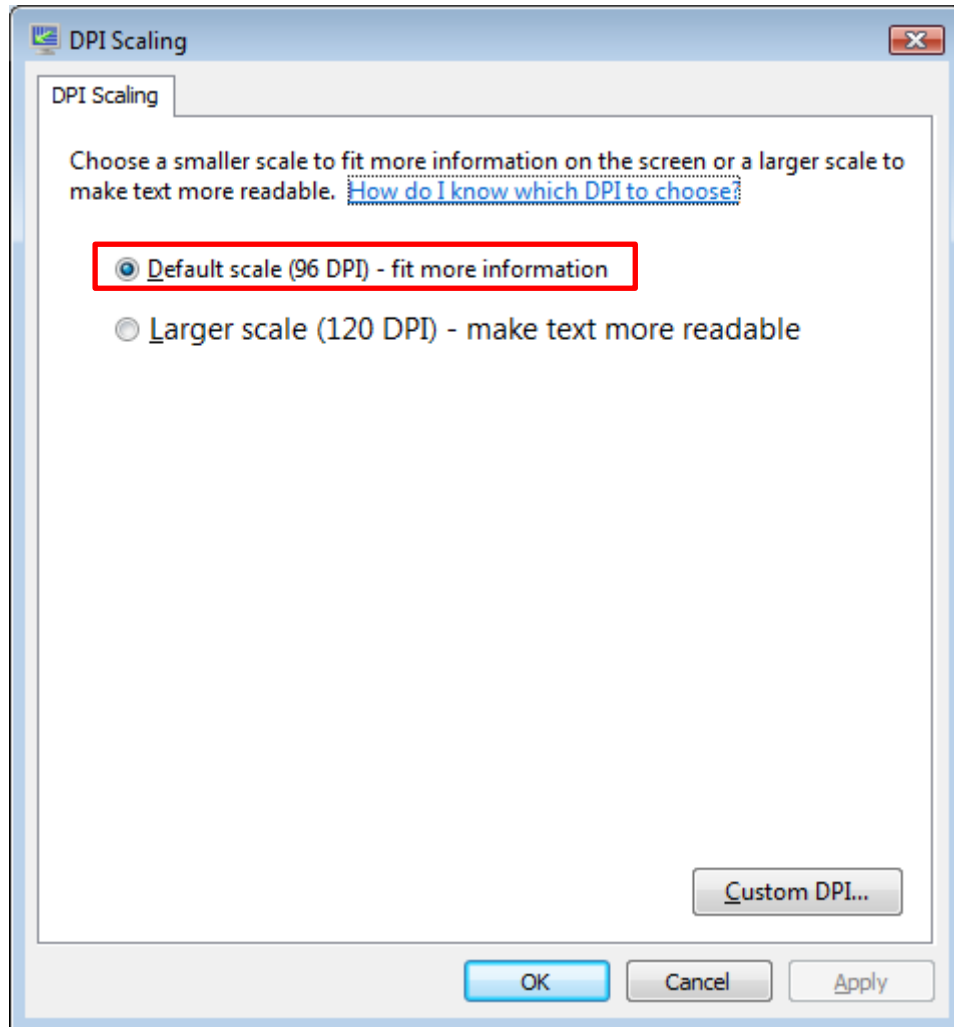


b) On the following screen click **Adjust font size (DPI)**:



c) On the following screen select the correct DPI setting to run Elefir-EN which is:

- **Default scale (96 DPI) – fit more information**

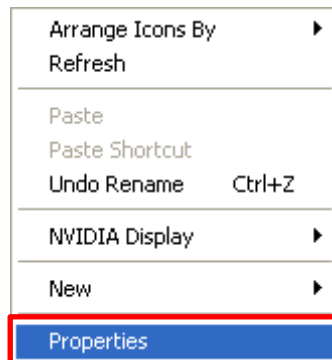


d) Click **Apply** and then **Ok** to apply all changes and reboot your computer.

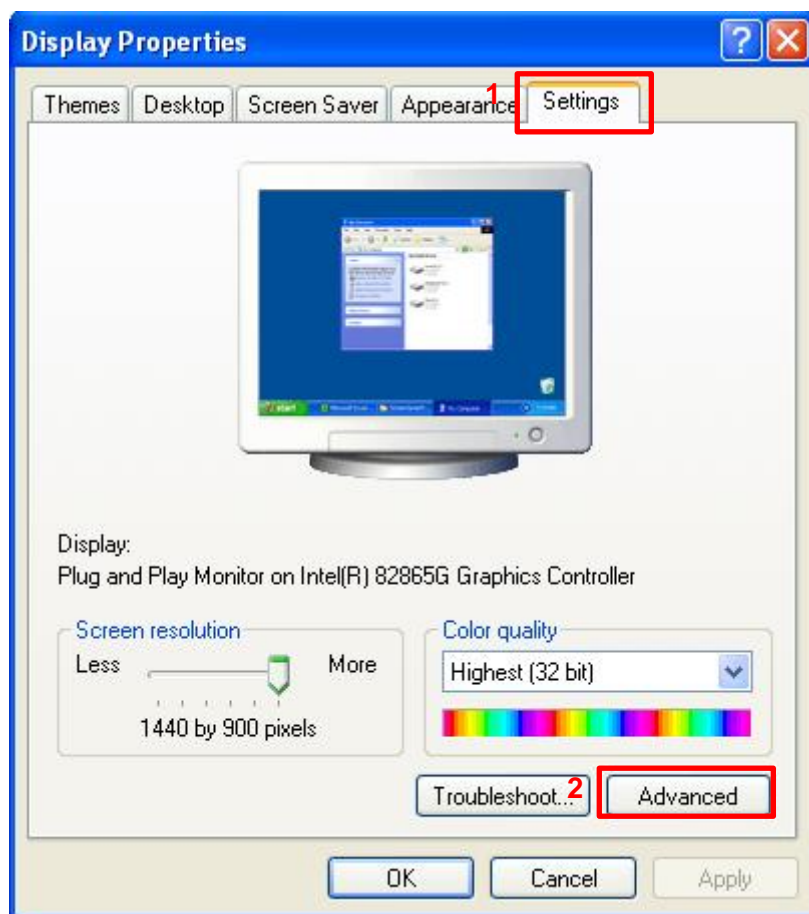
e) After reboot **Run Elefir-EN**.

## 1.3 Solution for Windows XP

a) Right click on an empty area of your desktop to open the context menu and click on **Properties**:

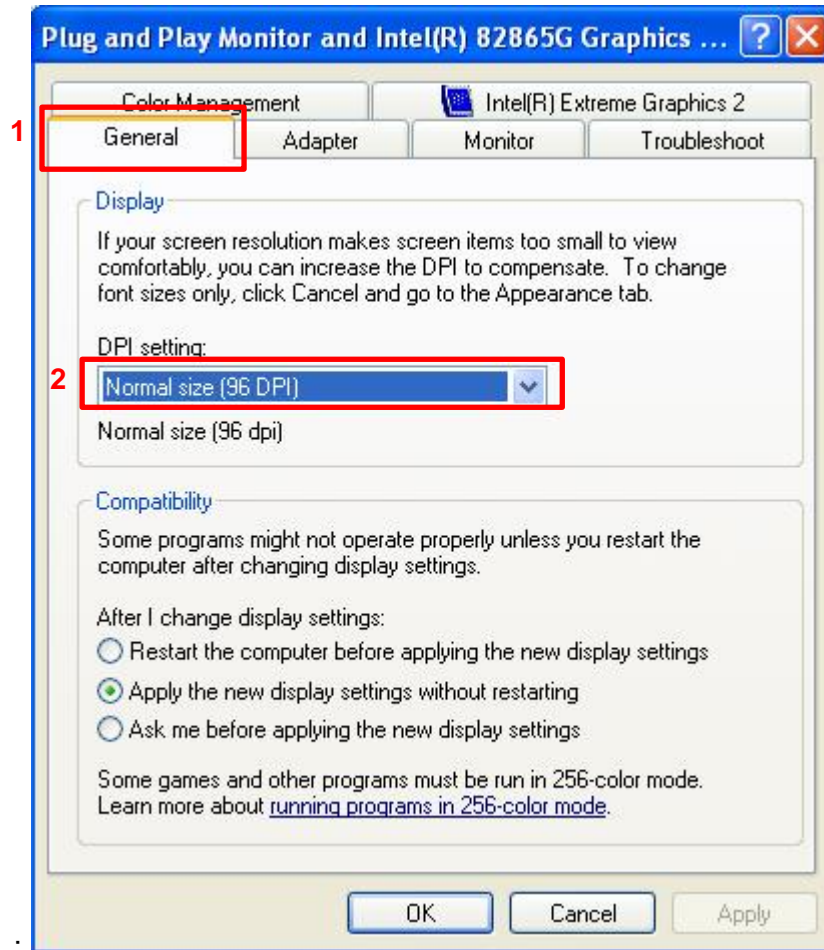


b) On the following screen select the **Settings** tab and click on **Advanced**:



c) On the following screen select the **General** tab and select the correct DPI setting to run Elefir-EN which is:

- **Normal size (96 DPI)**



d) Click **Apply** and then **Ok** to apply all changes and reboot your computer.

e) After reboot **Run Elefir-EN**.