

Elefir-EN

FIRE DESIGN OF STRUCTURAL MEMBERS
ACCORDING TO EUROCODE 3

SOLUTION CENTER

DECEMBER 2010

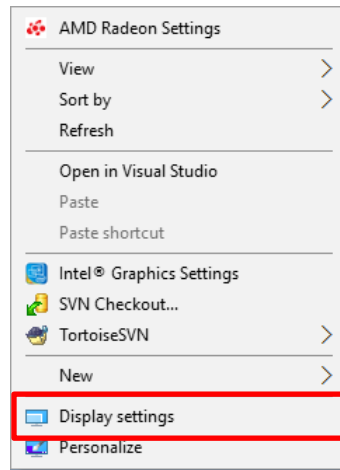
Contents

1. Changing Windows DPI.....	2
1.1. Solution for Windows 10.....	2
1.2. Solution for Windows 7.....	3
1.3. Solution for Windows Vista.....	5
1.4. Solution for Windows XP.....	7

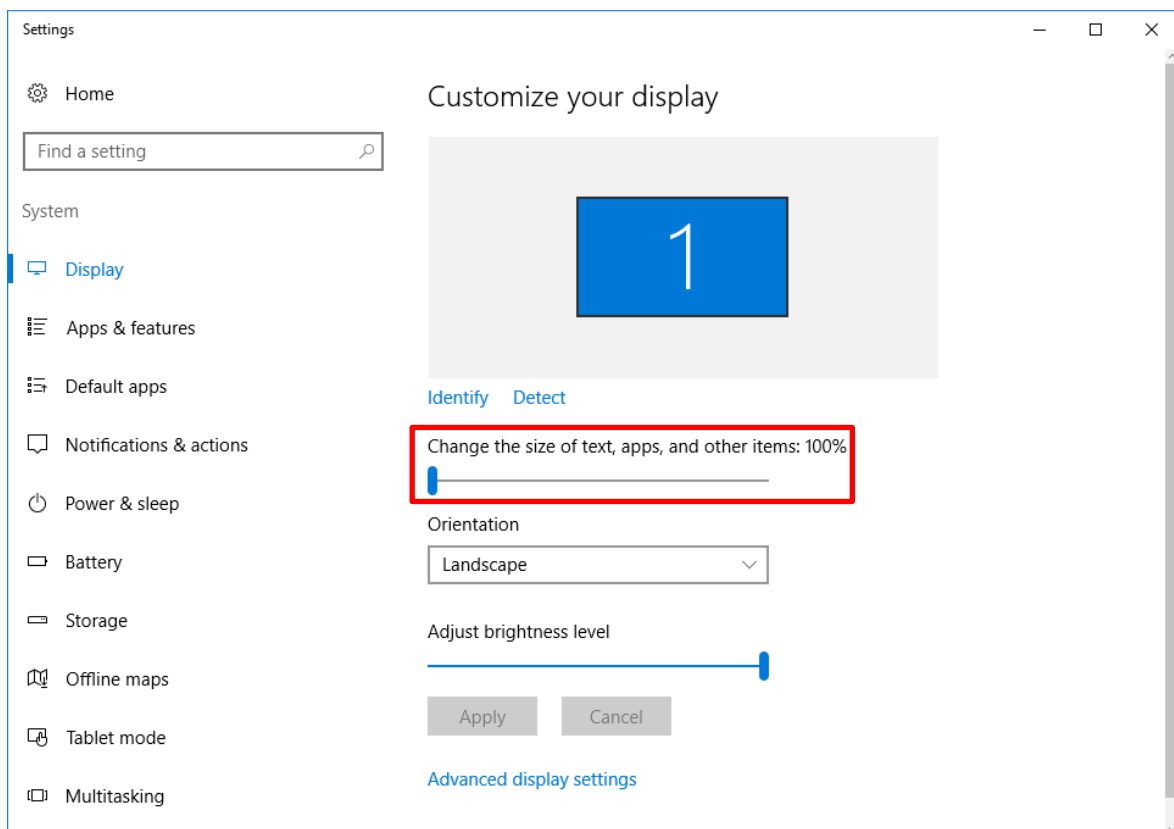
1. Changing Windows DPI

1.1. Solution for Windows 10

a) Right click on an empty area of your desktop to open the context menu and click on **Display settings**:



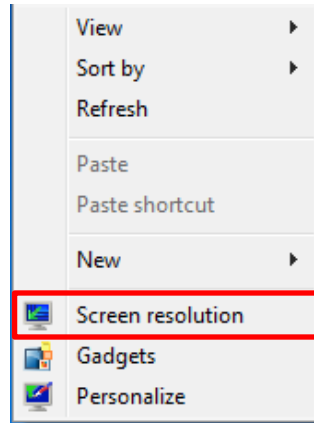
b) On the following screen select **Change the size of text, apps, and other items: 100%**



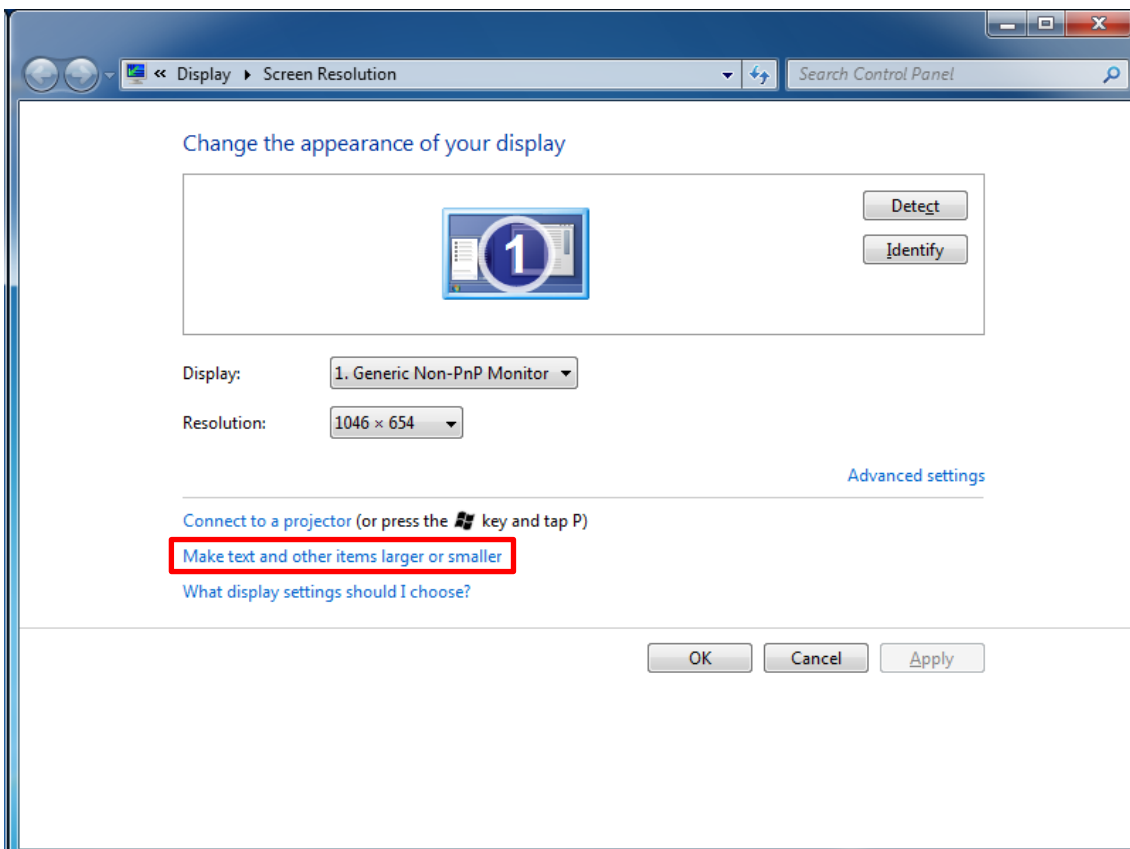
c) Now you can **Run Elefir-EN**.

1.2. Solution for Windows 7

a) Right click on an empty area of your desktop to open the context menu and click on **Screen Resolution**:

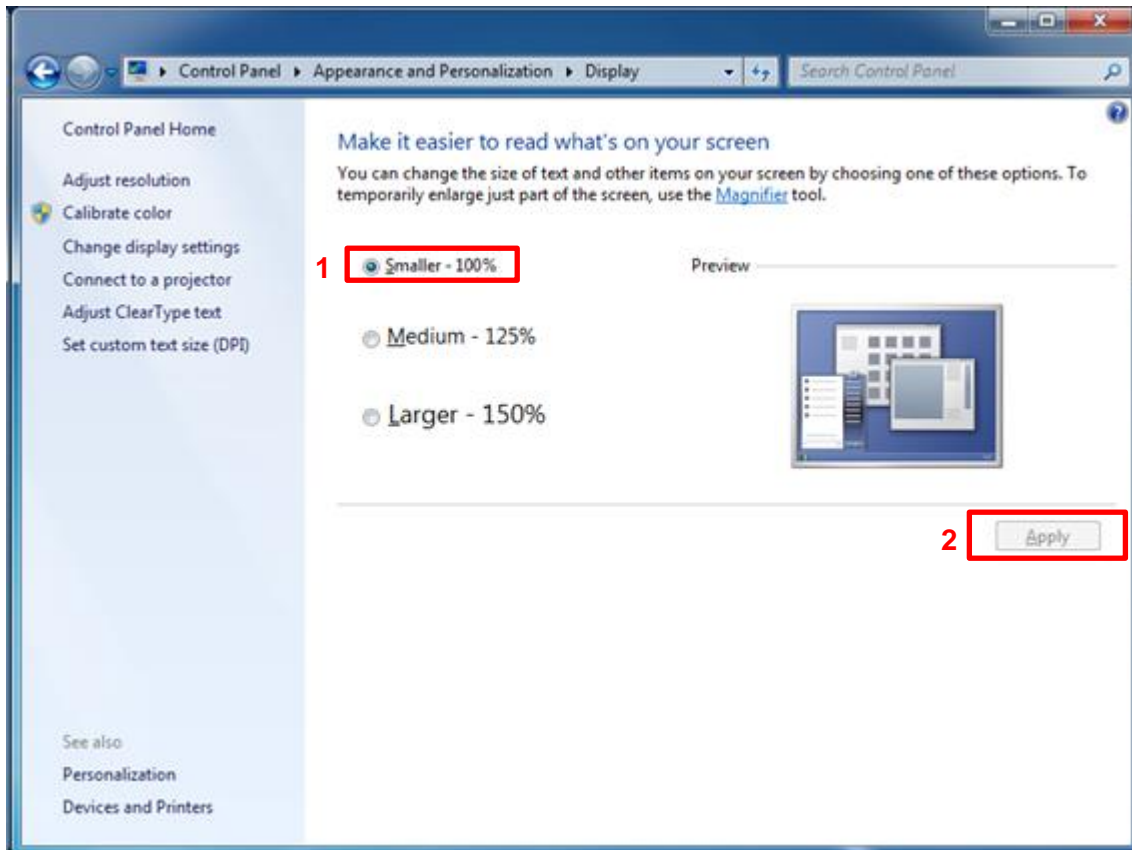


b) On the following screen click **Make text and other items larger or smaller**:



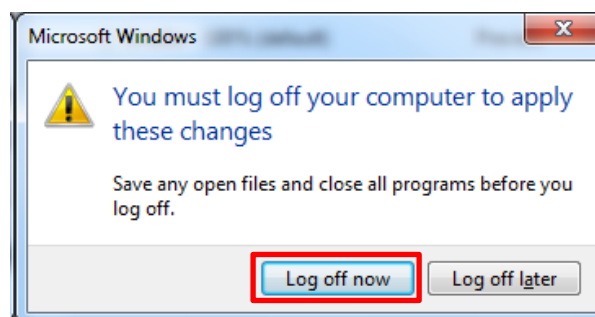
c) On the following window, choose the correct option to run Elefir-EN which is:

- **Smaller - 100%**



Click on **Apply** button to apply the changes to your Operating System.

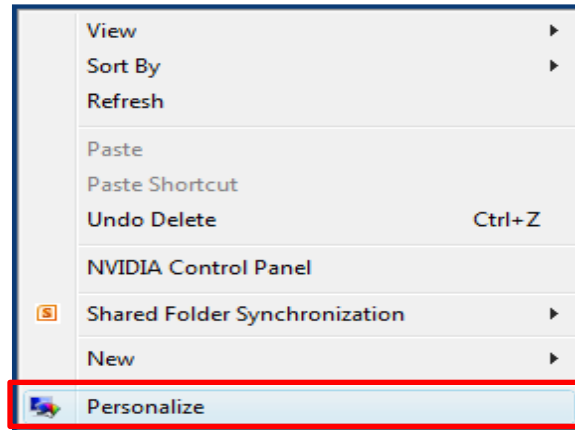
d) In the next window, click on **Log off now**.



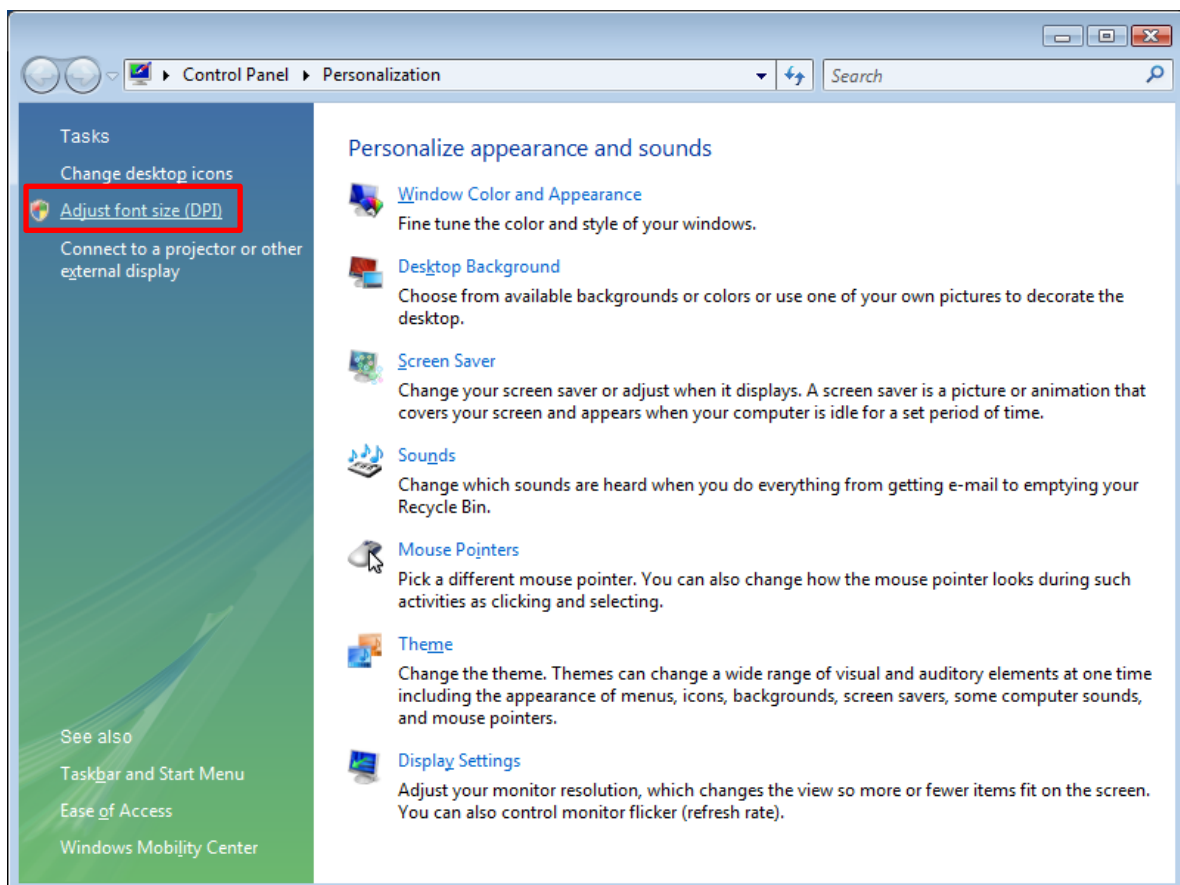
e) After that, **Log in** again and **Run Elefir-EN**.

1.3. Solution for Windows Vista

a) Right click on an empty area of your desktop to open the context menu and click on **Personalize**:

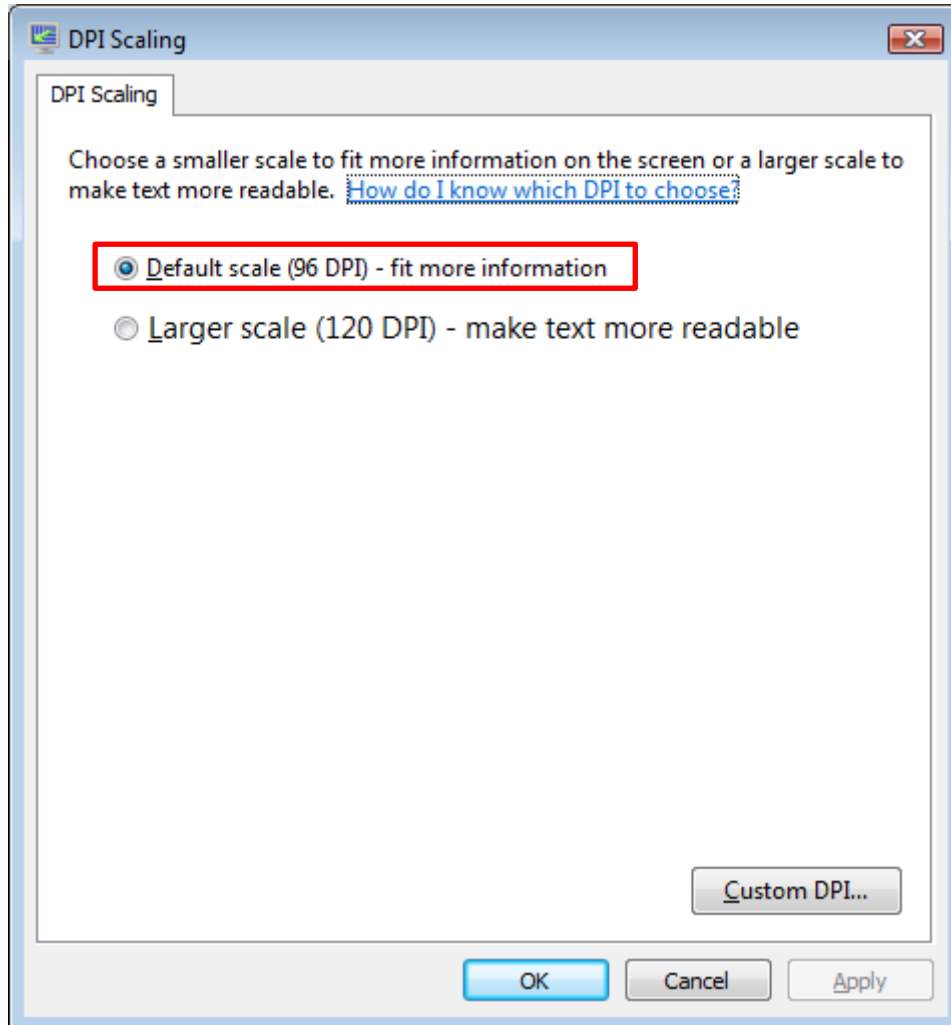


b) On the following screen click **Adjust font size (DPI)**:



c) On the following screen select the correct DPI setting to run Elefir-EN which is:

- **Default scale (96 DPI) – fit more information**

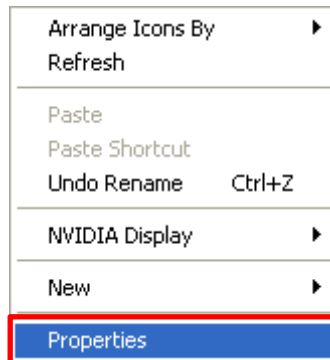


d) Click **Apply** and then **Ok** to apply all changes and reboot your computer.

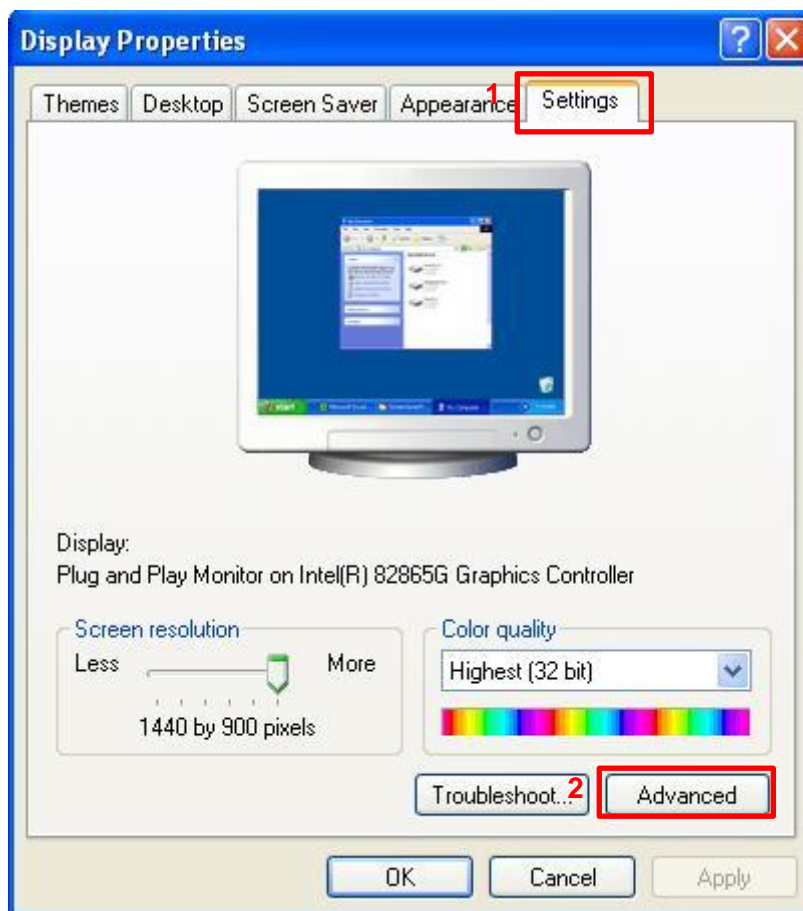
e) After reboot **Run Elefir-EN**.

1.4. Solution for Windows XP

a) Right click on an empty area of your desktop to open the context menu and click on **Properties**:

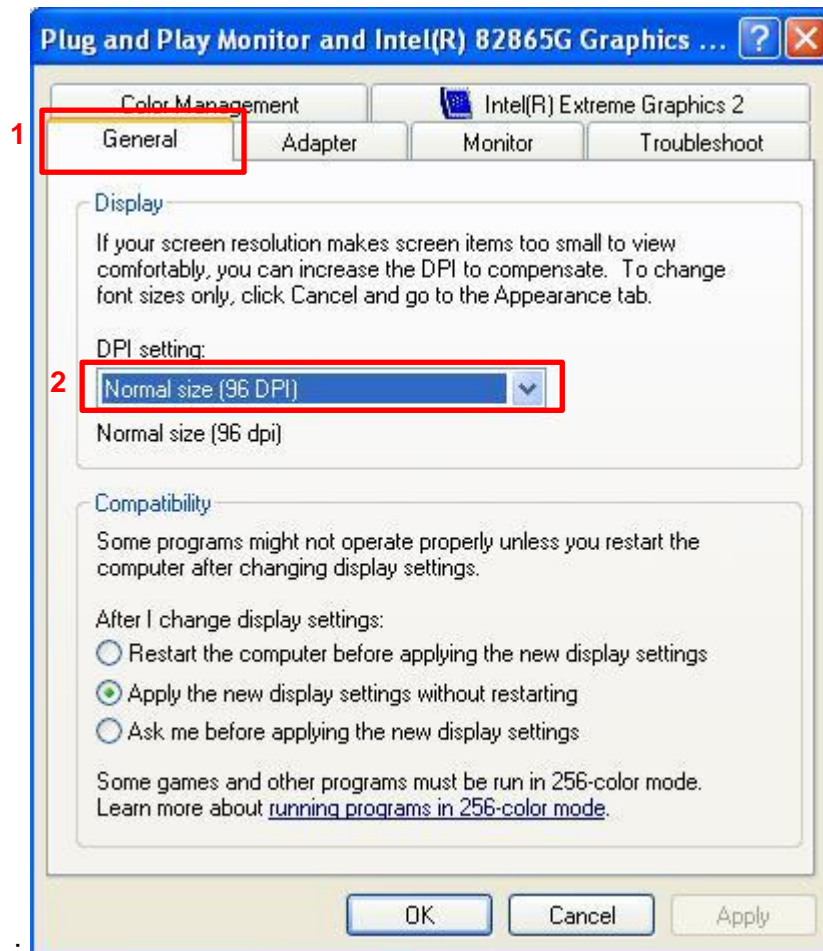


b) On the following screen select the **Settings** tab and click on **Advanced**:



c) On the following screen select the **General** tab and select the correct DPI setting to run Elefir-EN which is:

- **Normal size (96 DPI)**



d) Click **Apply** and then **Ok** to apply all changes and reboot your computer.

e) After reboot **Run Elefir-EN**.